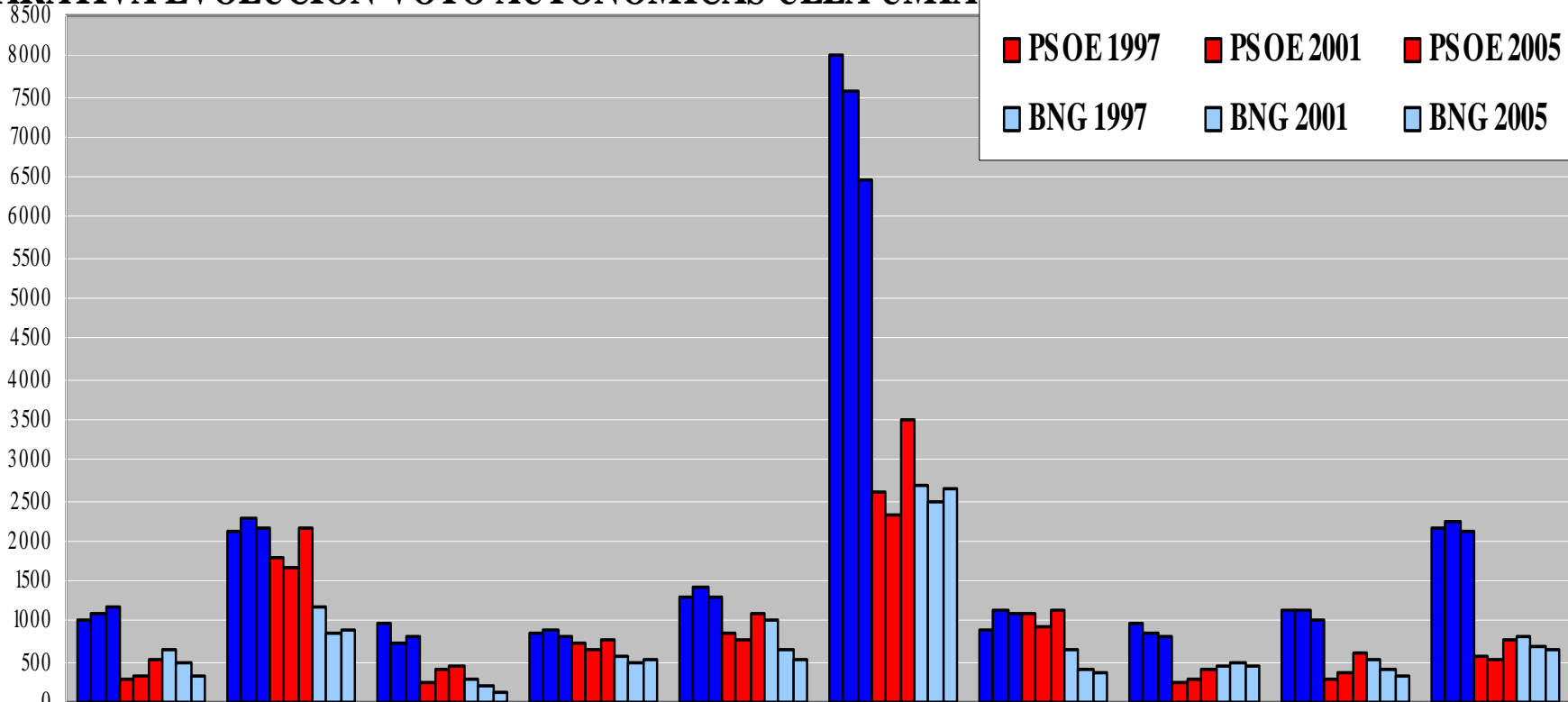
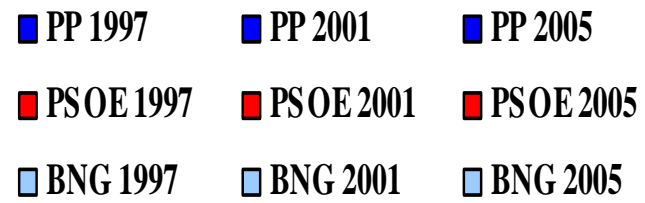
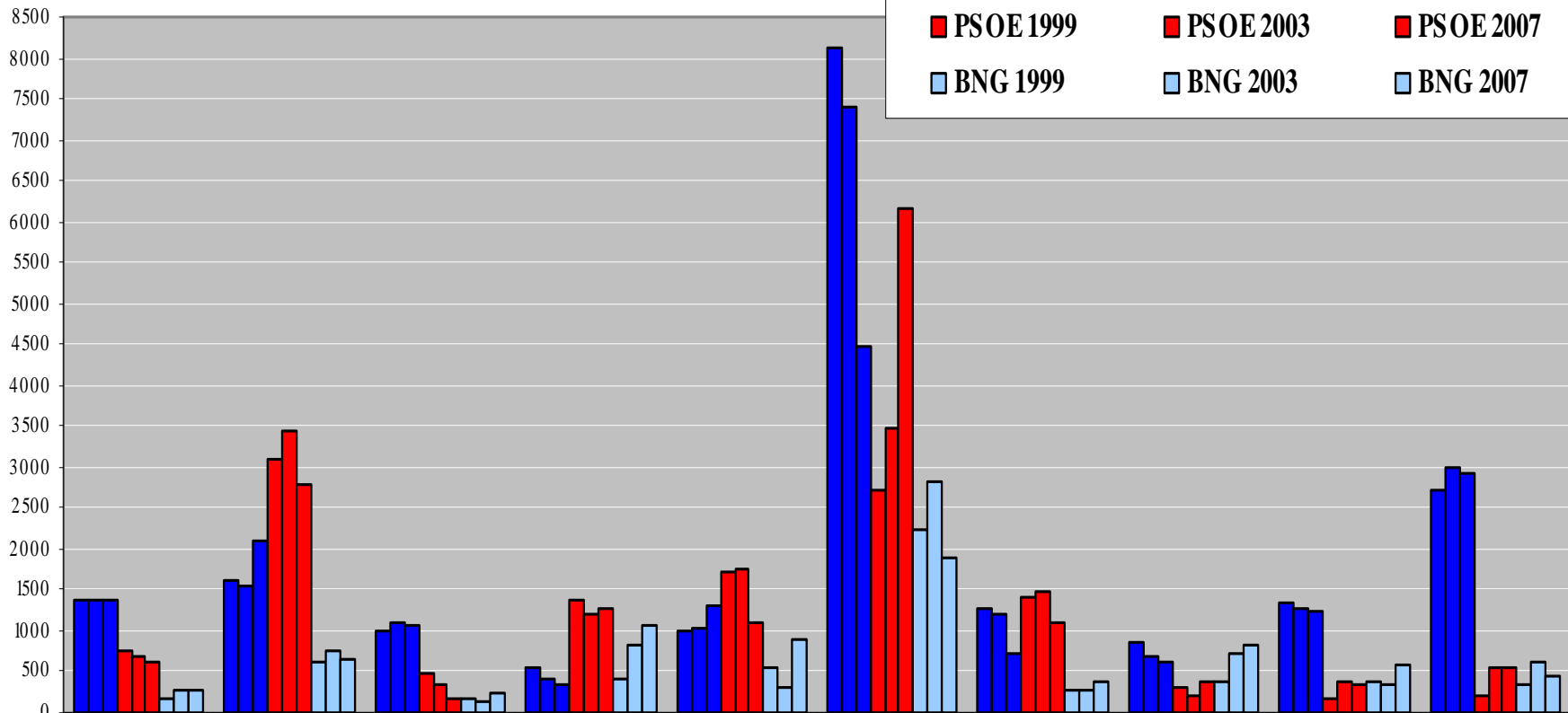
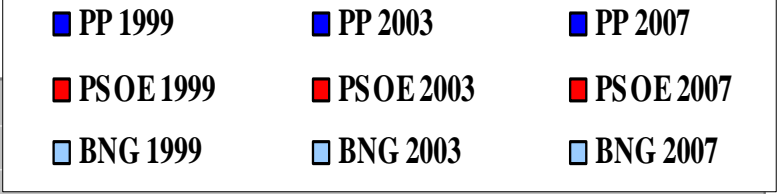


COMPARATIVA EVOLUCIÓN VOTO AUTONÓMICAS ULLA UMIA



	BARRO	CALDAS DE REIS	CAMPO LAMEIRO	CATOIRA	CUNTIS	ESTRADA (A)	MORAÑA	PONTECESURES	PORTAS	VALGA
■ PP 1997	1015	2099	989	858	1290	8029	911	970	1145	2152
■ PP 2001	1099	2287	751	902	1414	7570	1128	868	1136	2244
■ PP 2005	1181	2170	798	827	1292	6474	1083	803	1023	2123
■ PSOE 1997	272	1796	251	727	848	2587	1087	244	286	552
■ PSOE 2001	320	1686	388	645	769	2308	946	267	364	528
■ PSOE 2005	524	2161	429	759	1109	3511	1137	397	594	761
■ BNG 1997	656	1194	295	561	1031	2694	654	437	511	823
■ BNG 2001	496	849	201	503	661	2480	396	472	403	702
■ BNG 2005	338	904	140	521	525	2640	351	457	335	659

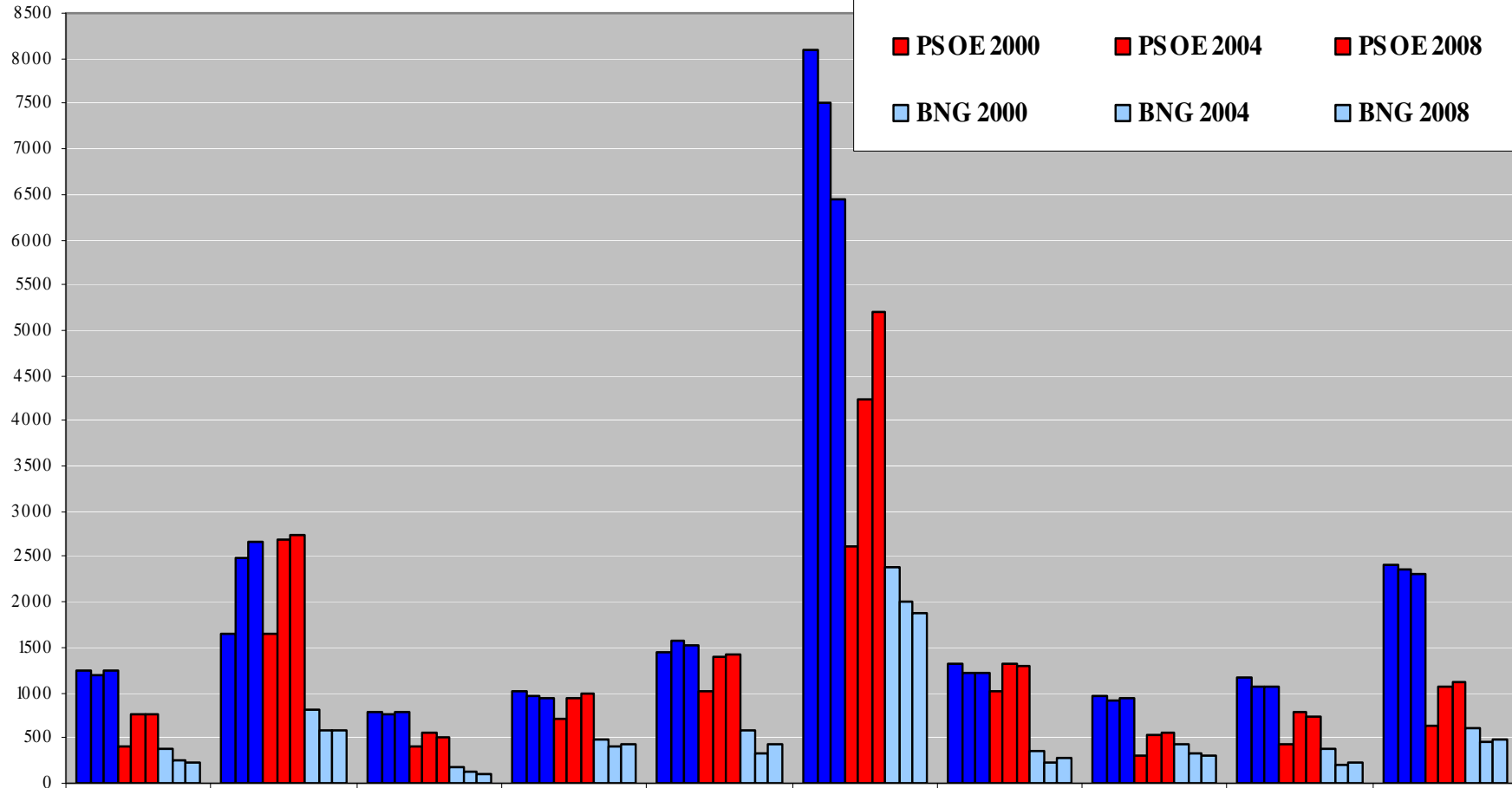
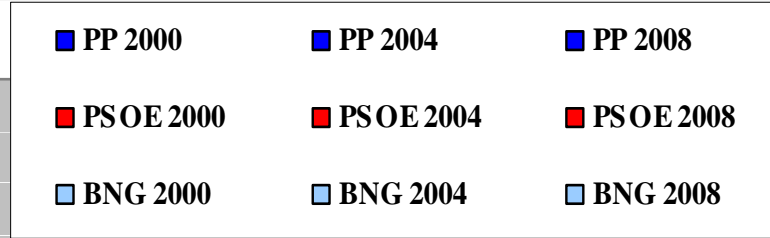
COMPARATIVA EVOLUCIÓN VOTO MUNICIPAIS ULLA UMIA



	BARRO	CALDAS DE REIS	CAMPO LAMEIRO	CATOIRA	CUNTIS	ESTRADA (A)	MORAÑA	PONTECESURES	PORTAS	VALGA
--	-------	----------------	---------------	---------	--------	-------------	--------	--------------	--------	-------

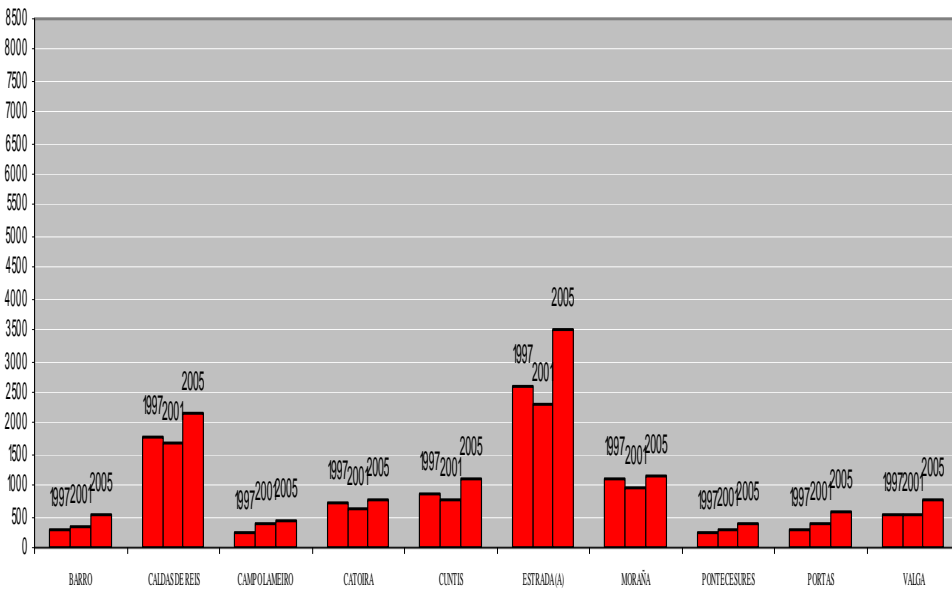
■ PP 1999	1393	1616	987	549	1013	8138	1275	874	1337	2706
■ PP 2003	1372	1540	1101	404	1016	7394	1203	690	1287	2997
■ PP 2007	1387	2111	1055	328	1316	4472	727	616	1235	2939
■ PSOE 1999	774	3090	473	1372	1721	2719	1417	322	177	222
■ PSOE 2003	682	3444	333	1201	1765	3469	1473	190	391	538
■ PSOE 2007	628	2773	156	1265	1112	6168	1109	366	335	561
■ BNG 1999	179	622	180	413	550	2247	285	362	382	331
■ BNG 2003	282	760	151	816	304	2820	291	706	334	633
■ BNG 2007	288	642	232	1052	881	1901	388	838	595	443

COMPARATIVA EVOLUCIÓN VOTO XERAIS ULLA UMIA

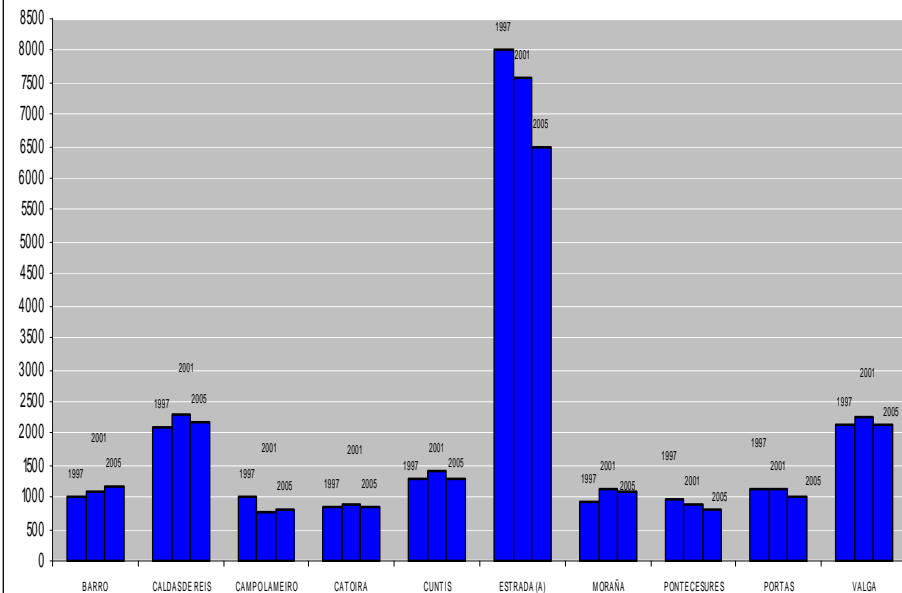


	BARRO	CALDAS DE REIS	CAMPO LAMEIRO	CATOIRA	CUNTIS	ESTRADA (A)	MORAÑA	PONTECESURES	PORTAS	VALGA
■ PP 2000	1240	1656	798	1009	1458	8084	1324	973	1158	2407
■ PP 2004	1195	2498	763	958	1570	7521	1206	908	1056	2358
■ PP 2008	1236	2658	779	927	1529	6435	1222	931	1063	2313
■ PSOE 2000	408	1656	403	717	1025	2601	1014	299	429	642
■ PSOE 2004	752	2687	548	931	1387	4236	1324	535	790	1066
■ PSOE 2008	756	2734	514	997	1409	5198	1282	560	741	1108
■ BNG 2000	373	808	174	475	583	2388	360	436	368	612
■ BNG 2004	244	579	122	410	322	2011	221	339	207	446
■ BNG 2008	238	578	106	419	427	1866	281	301	235	478

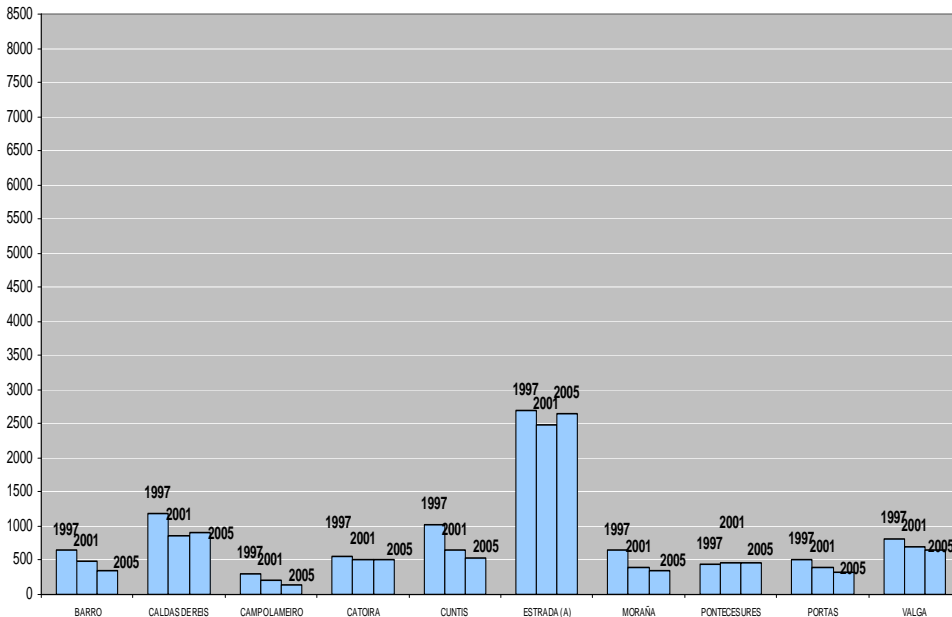
PESO VOTO PSDEG-PSOE AUTONÓMICAS ULLAUMIA



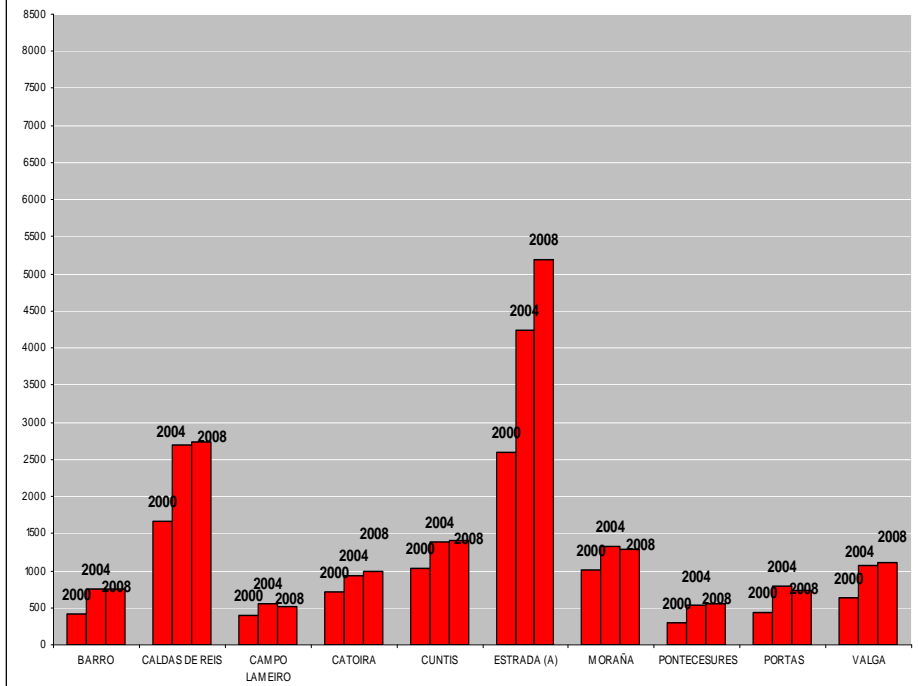
PESO VOTO PP AUTONÓMICAS ULLAUMIA



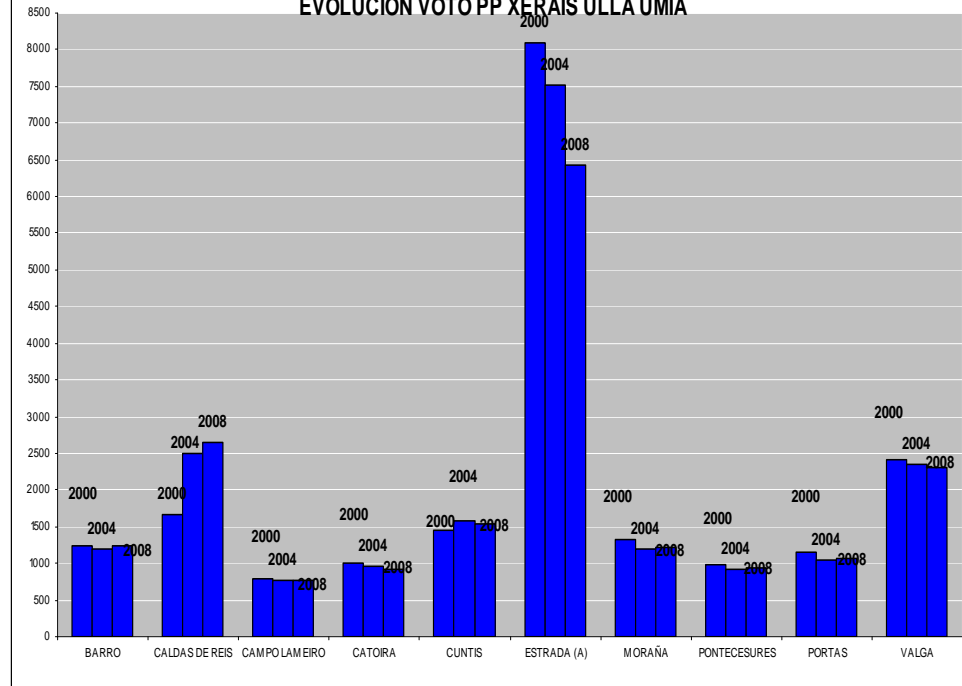
PESO VOTO BNG AUTONÓMICAS ULLAUMIA



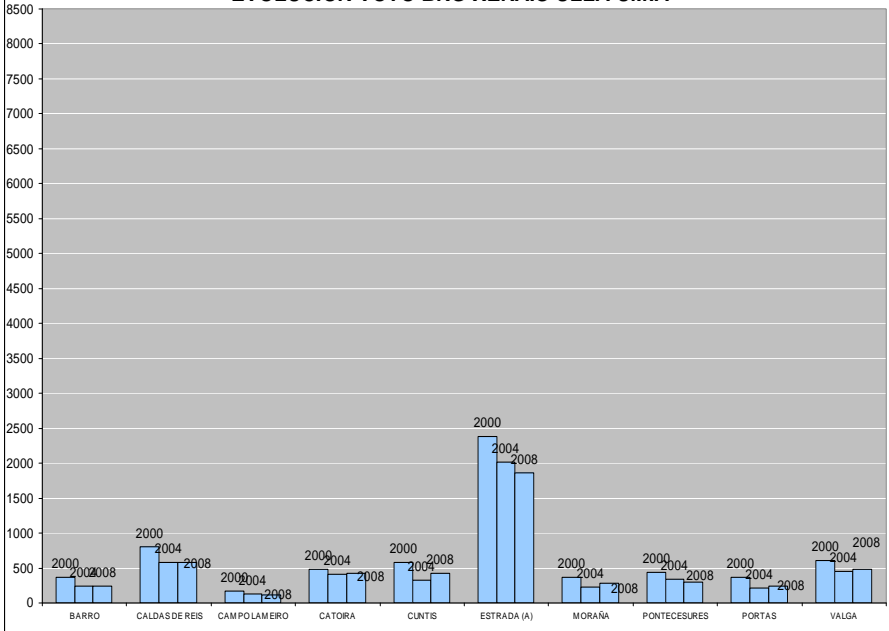
PESO VOTO PSDEG-PSOE XERAIS ULLA UMIA



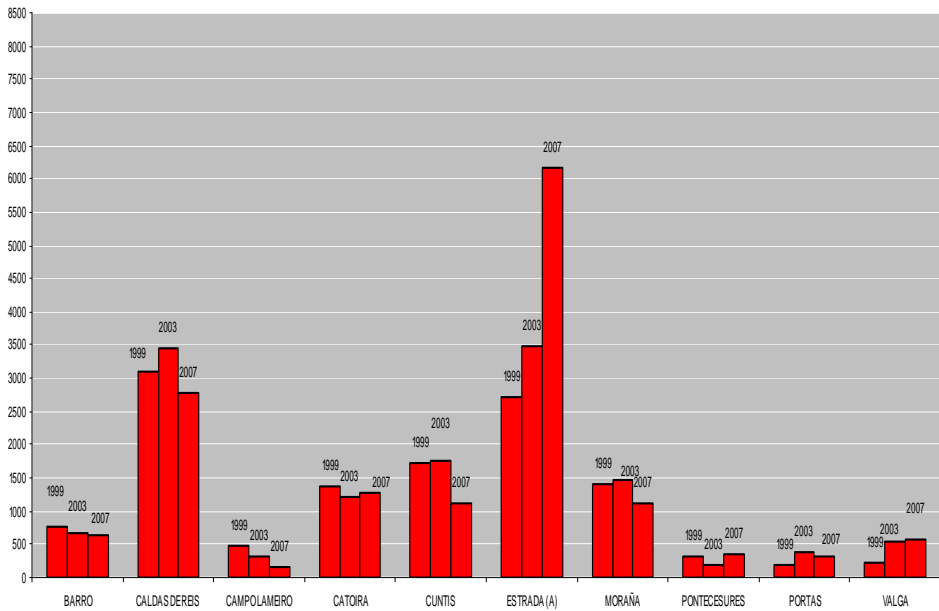
EVOLUCIÓN VOTO PP XERAIS ULLA UMIA



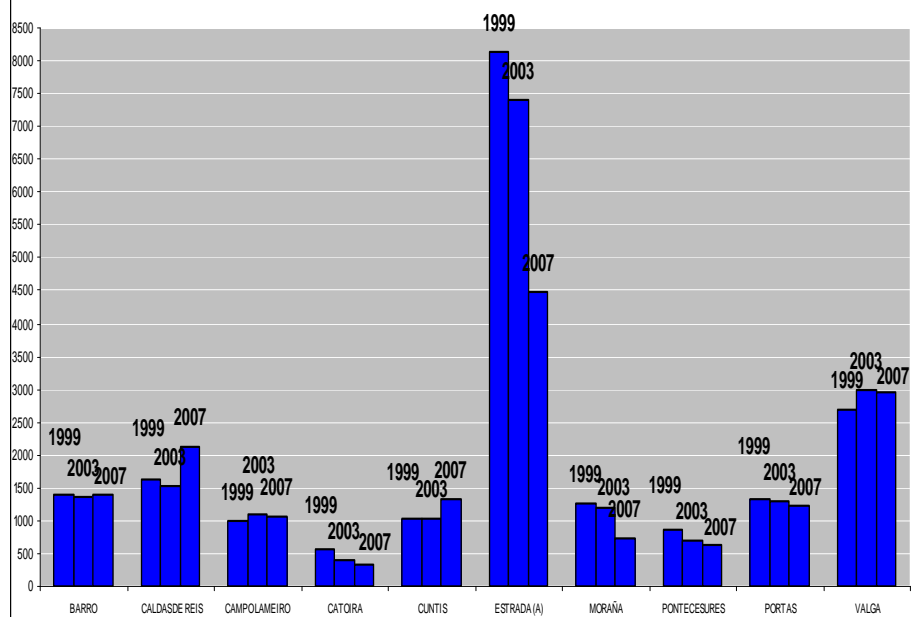
EVOLUCIÓN VOTO BNG XERAIS ULLA UMIA



PESO VOTO PSDEG-PSOE MUNICIPAIS ULLA UMIA



PESO VOTO PP MUNICIPAIS ULLA UMIA



PESO VOTO BNG MUNICIPAIS ULLA UMIA

